





**** CHARMING SEMI
DETACHED BUNGALOW ****

Located in the highly regarded village of Tutbury this semi detached bungalow offers a porch, modern fitted kitchen, lounge, two bedrooms, shower room and a garden room. Loft with velux window, floored and ladder. Drive and covered storage area with light and power., landscaped garden. Offered for sale with no upward chain.



ABODE
SALES & LETTINGS

PORCH

Entrance door into the porch with upvc double glazed windows and a door to -

KITCHEN

Fitted wall mounted, base and drawer units with work surfaces and a sink and drainer unit. Fitted electric double oven and hob with extractor hood, integrated washing machine, space for a fridge freezer and a upvc double glazed window.

LOUNGE

Feature fireplace, radiator and upvc double glazed window.

INNER HALL

Loft access, airing cupboard and doors to -

LOFT

Pull down ladder , velux window, radiator and is floored throughout.

BEDROOM

Fitted wardrobes and cupboards, radiator and upvc double glazed window.

BEDROOM

Currently used as a sitting room with a radiator and doors into the conservatory.

GARDEN ROOM

Upvc double glazed windows and doors onto the garden and a radiator.

SHOWER ROOM

Double shower, vanity sink unit with wash hand basin and drawers under, low flush wc, chrome ladder style radiator and a upvc double glazed window.

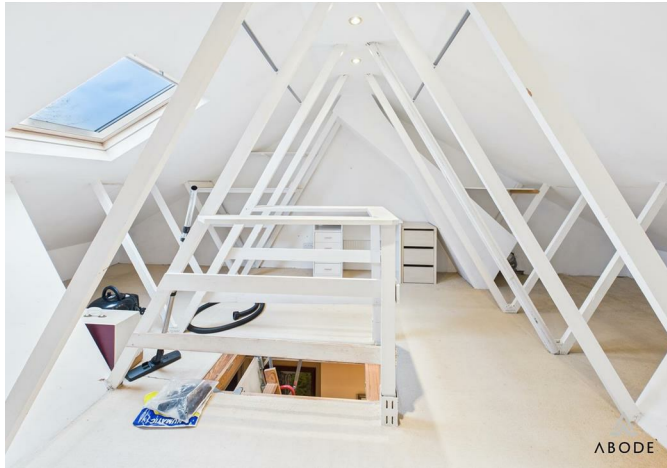
OUTSIDE

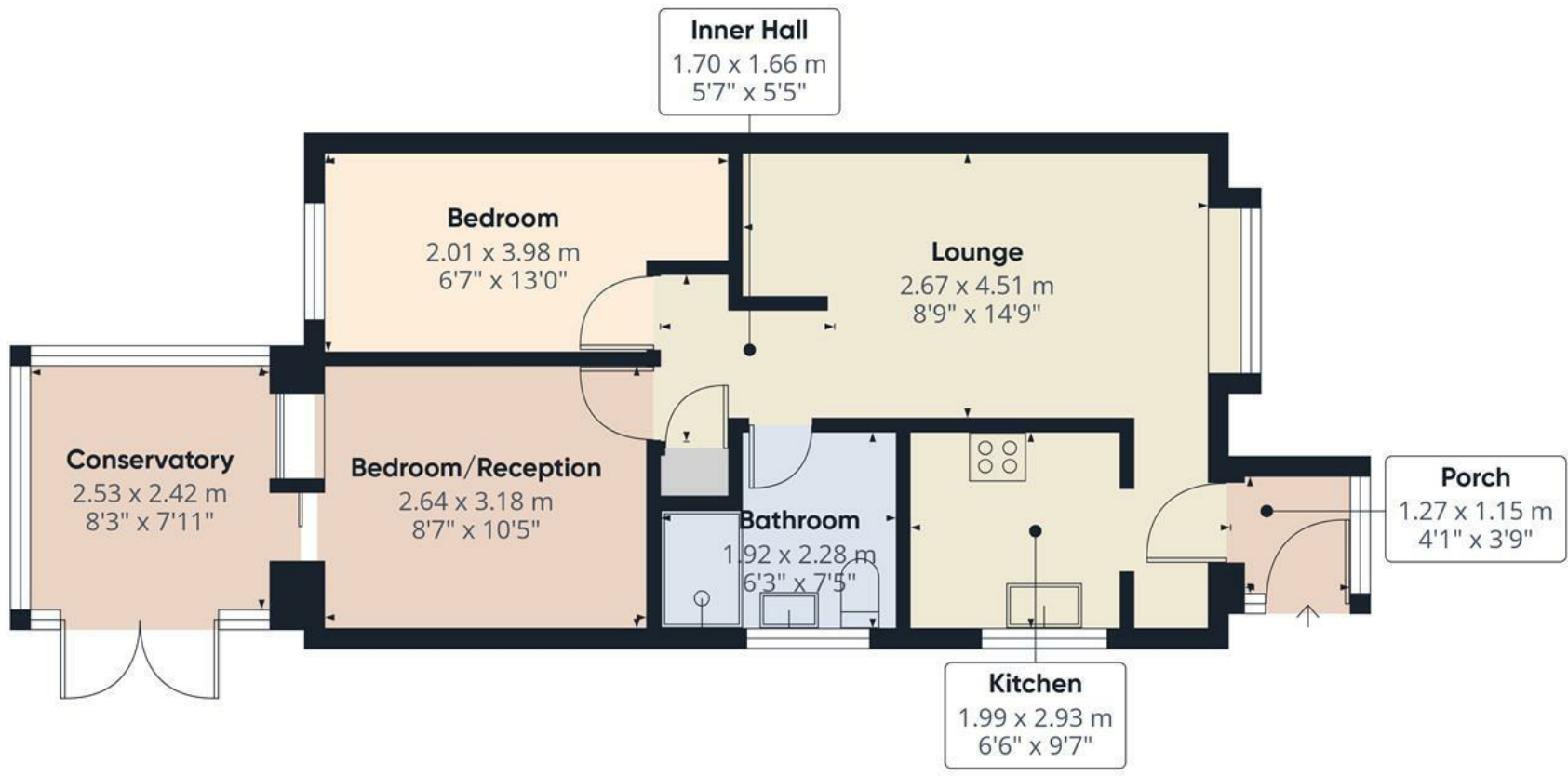


Drive with gate to covered storage area with light and power. The rear garden offers a paved patio, 2 levels of lawn and a garden shed and potting shed.









Approximate total area⁽¹⁾
47.8 m²
515 ft²

(1) Excluding balconies and terraces

Calculations reference the RICS IPMS 3C standard. Measurements are approximate and not to scale. This floor plan is intended for illustration only.

GIRAFFE360



Floor 0

